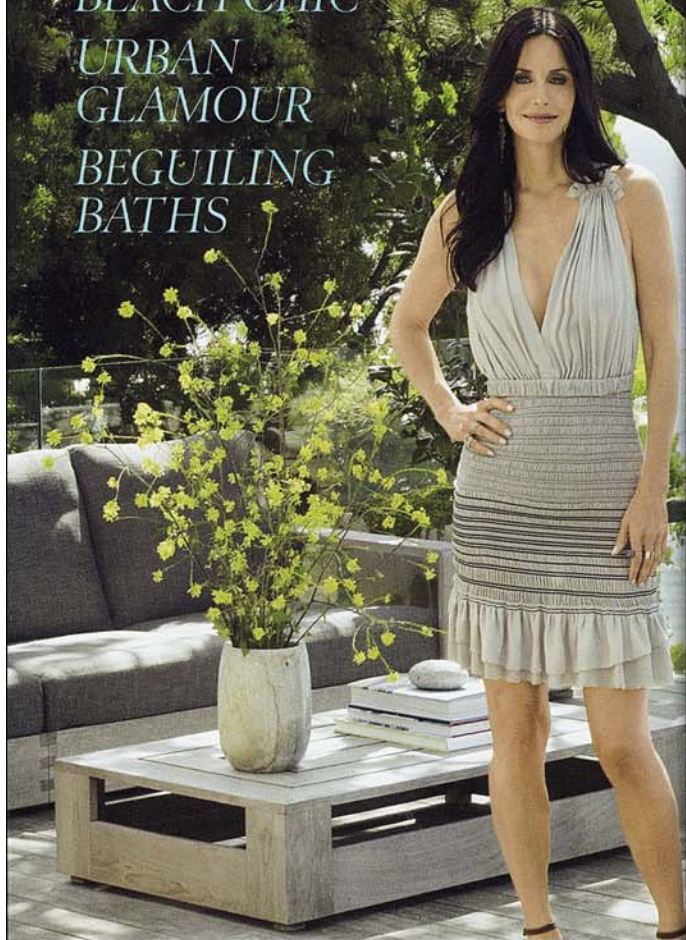


# THE DECOR

JULY/AUGUST 2011

## THE BEST of SUMMER

BEACH CHIC  
URBAN  
GLAMOUR  
BEGUILING  
BATHS



In the master bedroom, the custom-made head- and footboards are zinc, the selenite bedside tables are by Blackman Cruz, and the bedding is by Deborah Sharpe Linens.

In the master bedroom, the custom-made head- and footboards are zinc, the selenite bedside tables are by Blackman Cruz, and the bedding is by Deborah Sharpe Linens; the two-tone Swing Leg chair is by George Nelson, and the rugs are from DDC. **FACING PAGE:** The vanity and mirror frame in the master bath are custom-made; the pendant lights are custom made, and the sink fittings are by Waterworks; the chair and ottoman are upholstered in a velvet by Rose Tarlow Melrose House, and the artwork was done by Cox's father while he was in high school. See Resources.